

Flower roll container

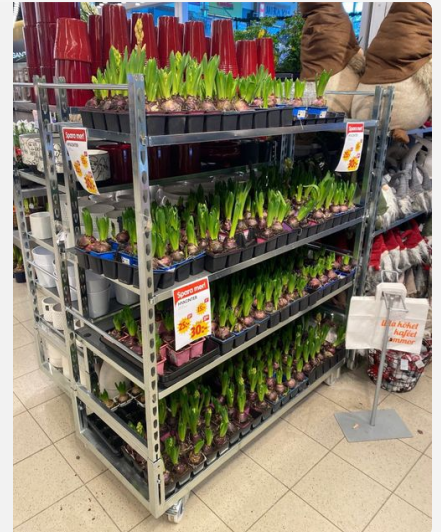
This roll container is designed for the transport, storage and display of flower and green plants.

It is both a foldable and stackable roll container.

Its adjustable shelf height and angle make the unit ergonomic and multipurpose.

The sides are foldable and the units are stackable saving a huge amount of space when empty or in reverse logistics.

The Flower roll container exists also in footprint 565 x 715 mm.



Key benefits

- ✓ Easy to manoeuvre and maintain
- ✓ Very space efficient in storage and reverse logistics
- ✓ Can be used as a display in the store thanks to its gravity-fed shelf
- ✓ Can carry different plant tray sizes and models
- ✓ Ready-to-sell

Technical specifications

External dimensions	565 x 1350 x 1580 mm
Internal dimensions	545 x 1270 x 1245 mm
Unit tare weight with 5 shelves	57 kg
Distance between shelves	70-1120 mm
Stacking height	250 mm
Safe working load per shelf	50 kg
Safe working load per unit	300 kg
Castor size	100 mm
Loaded units / 13,6m trailer	40
Empty units / 13,6m trailer	124
Finish	Zinc electro-plated + dip-lacquered

Images



[k-hartwall.com](https://www.k-hartwall.com)

[linkedin.com/company/k-hartwall-oy-ab](https://www.linkedin.com/company/k-hartwall-oy-ab)

[youtube.com/user/KHartwall](https://www.youtube.com/user/KHartwall)

[instagram.com/khartwall](https://www.instagram.com/khartwall)

Designed for following uses and industries

