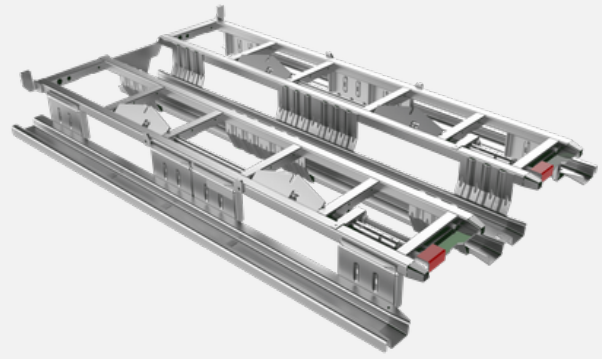


Lean Adaptor pallet

Safe and strong unit for easy transport or warehousing of Lean Dollies, Lean Adaptor pallet combines the benefits of both Euro pallets and wheeled units.

It can be moved at once with a forklift from both the short and the long sides. When needed, Lean Dollies can be easily rolled out from the pallet without lifting.



Key benefits

- ✓ Optimal use of transport and floor space
- ✓ Reduce turnaround time
- ✓ Low repair costs: light weighted but strong construction
- ✓ Designed for handling on automated conveyor systems
- ✓ Excellent stability: optimized for return freight
- ✓ Painted brakes for better visibility
- ✓ Safe unit with dolly stop at rear

Technical specifications

External dimensions	1210 x 800 x 120 mm
Unit tare weight	32 kg
Working load	1000 kg
Loaded units / 40' trailer	60
Stacked units / 40' trailer	450
Stacking in warehouse	3 on the top of each other (max. 3000 kg on lowest adaptor pallet when using the adapted lid)
Empty staking	15 units
Design to carry	4 units of 600 x 400 mm Dollies or 1 unit of 600 x 800 mm Dolly and 2 units of 600 x 400 mm Dollies or 2 units of 600 x 800 mm Dollies or 6 units of 400 x 400 mm Dollies or 1 unit 1200 x 800 mm Dolly
Finish	Electro zinc plated

Images



 k-hartwall.com

 youtube.com/user/KHartwall

 linkedin.com/company/k.-hartwall-oy-ab

 instagram.com/khartwall

Designed for following uses and industries

